

## Industrial Indicators of the Buenos Aires Province

This report presents the results for the month of \_\_\_\_\_  
December 2011.

February 14, 2012

## Summary

During 2011 the automotive industry, production of cement, processing of poultry and manufacture of basic iron and steel lead the increases in the industrial indicators of the Buenos Aires Province<sup>1</sup>. Specifically, compared to 2010, the increases were: Manufacture of pickup trucks (22.0%), Production of cement (14.0%), Manufacture of passenger and freight transport vehicles (12.4%), Manufacture of family cars and minivans (12.0%), Production and processing of poultry (10.7%) and Manufacture of basic iron and steel (10.5%).

In December, the highest year-over-year (Y/Y) increases in their levels of production were: Production of cookies and cakes (14.0%), Manufacture of pickup trucks (13.0%), Manufacture of refined petroleum (11.0%), Production of cement (7.3%) and Production and processing of poultry (7.0%).

The following tables show the monthly, year-over-year and accumulated variation of the selected activities.

**Table 1**

### Variation of selected activities December 2011

Activity	Variation		
	Monthly	Y/Y	Accumulated
Production and processing of poultry	▲	▲	▲
Production of cold cuts	...	...	...
Production of milk and dried milk products	▲	▼	▼
Grinding wheat	▼	▼	▼
Production of cookies and cakes	▼	▲	▲
Production of beer, malt liquors and malt	▲	▲	▲
Production of cigarettes and tobacco products n.e.c.	▼	▼	▼
Edition of newspapers, magazines and periodicals publications	▲	▼	▼
Manufacture of refined petroleum	▲	▲	▼
Production of cement	▼	▲	▲
Manufacture of basic iron and steel	▲	▼	▲
Manufacture of family cars and minivans	▼	▼	▲
Manufacture of pickup trucks	▼	▲	▲
Manufacture of passenger and freight transport vehicles	▼	▼	▲

Notes: Provisional data.

... indicates data not available at the time of presentation of the results.

Source: Dirección Provincial de Estadística (DPE).

<sup>1</sup>The industrial indicators of the Buenos Aires Province are monthly calculated by the team of the *Dirección de Estadísticas Económicas* composed by Veronica Teilletchea (principal analyst) and Manuel Vargas (data collection).

**Table 2**  
**Activities grouped according to their Y/Y variation and accumulated variation**  
**December 2011**

Accumulated variations (Dec-Dec)		
Sign	+	-
Y/Y variations (Dec)	+	-
	Production and processing of poultry Production of cookies and cakes Production of beer, malt liquors and malt Production of cement Manufacture of pickup trucks	Manufacture of refined petroleum
-	Manufacture of basic iron and steel Manufacture of family cars and minivans Manufacture of passenger and freight transport vehicles	Production of milk and dried milk products Grinding wheat Production of cigarettes and tobacco products n.e.c. Edition of newspapers, magazines and periodicals publications

Note: Provisional data.

Source: Dirección Provincial de Estadística (DPE).

## Variation of the Industry in December 2011 for selected activities

This report show the performance of 12 activities, divided into 14 series that include: Production and processing of poultry; Production of cold cuts; Production of milk and dried milk products; Grinding wheat; Production of cookies and cakes; Production of beer, malt liquors and malt; Production of cigarettes and tobacco products n.e.c.; Edition of newspapers, magazines and periodicals publications; Manufacture of refined petroleum; Production of cement; Manufacture of basic iron and steel; Manufacture of family cars and minivans; Manufacture of pickup trucks<sup>2</sup> and Manufacture of passenger and freight transport vehicles.

Table 3 shows percentage variations (monthly, year-over-year, and accumulated) of the selected series for December 2011.

**Table 3**  
**Percentage variations**  
**December 2011**

Cnae Code 1997	Activity	Percentage Variations		
		Monthly	Y/Y	Accumulated to December 2011 inter- annual
15112	Production and processing of poultry	0.1	7.0	10.7
15113	Production of cold cuts	...	...	...
15201	Production of milk and dried milk products	4.1	-2.2	-3.2
15311	Grinding wheat	-19.3	-4.1	-4.3
15411	Production of cookies and cakes	-12.8	14.0	0.4
15530	Production of beer, malt liquors and malt	9.6	0.9	4.1
16009	Production of cigarettes and tobacco products n.e.c.	-3.7	-17.3	-0.8
22120	Edition of newspapers, magazines and periodicals publications	0.5	-2.0	-1.1
23200	Manufacture of refined petroleum	16.1	11.0	-2.0
26941	Production of cement	-9.1	7.3	14.0
27100	Manufacture of basic iron and steel	4.6	-2.2	10.5
34100	Manufacture of Automobiles			
	Family cars and minivans	-26.1	-20.2	12.0
	Pickup trucks	-7.3	13.0	22.0
	Passenger and freight transport vehicles	-36.1	-5.5	12.4

Notes: Provisional data.

... indicates data not available at the time of presentation of the results.

Source: Dirección Provincial de Estadística (DPE).

<sup>2</sup>This category also includes some models of family cars whose interior are adapted to carry some cargo.

Table 4 shows the evolution of the selected series (in index values) for the period 2007 - December 2011.

**Table 4**

**Annual and Monthly Indexes**  
**Base year 1999=100**

Period	Production and processing of poultry	Production of cold cuts	Production of milk and dried milk products	Grinding wheat	Production of cookies and cakes	Production of beer, malt liquors and malt	Production of cigarettes and tobacco products n.e.c.
2007	140.63	110.36	116.93	98.01	201.57	113.86	88.31
2008	149.13	115.84	116.96	101.84	172.63	121.50	95.18
2009	163.27	118.74	115.54	98.03	193.05	123.31	99.31
<b>2010</b>							
Jan-10	163.20	130.95	109.00	91.76	157.81	164.44	106.76
Feb-10	161.22	124.09	108.30	97.30	171.27	142.84	105.38
Mar-10	179.28	113.23	119.23	90.98	227.76	138.62	123.69
Apr-10	172.71	129.15	118.54	92.69	167.63	120.69	109.72
May-10	158.19	109.58	120.52	97.61	186.34	99.74	97.79
Jun-10	176.87	123.60	121.72	111.41	223.46	84.11	98.64
Jul-10	173.42	122.35	125.05	107.67	224.46	101.24	109.43
Aug-10	177.91	125.11	119.66	113.09	243.00	109.16	106.36
Sep-10	183.90	120.87	118.01	111.14	244.69	123.62	112.60
Oct-10	166.77	109.13	117.43	97.59	220.42	146.49	101.85
Nov-10	182.24	111.98	118.48	115.83	202.66	149.01	118.23
Dec-10	193.31	123.37	115.06	75.22	157.62	174.30	112.85
<b>2011</b>							
Jan-11	176.09	119.46	102.57	103.54	165.22	186.43	118.62
Feb-11	178.16	121.51	106.71	99.45	184.92	154.79	114.45
Mar-11	188.69	117.81	123.57	88.70	221.52	142.76	104.42
Apr-11	188.58	126.78	112.95	101.77	209.68	132.01	114.05
May-11	195.49	117.62	122.44	106.97	211.92	98.57	120.93
Jun-11	190.72	119.87	118.69	106.75	214.80	80.52	110.71
Jul-11	183.44	126.28	116.83	100.26	205.93	96.78	108.53
Aug-11	204.75	134.18	121.19	92.85	221.45	121.48	104.44
Sep-11	201.75	137.35	110.07	97.16	208.63	127.94	109.75
Oct-11	192.05	125.79	110.60	91.93	207.46	140.12	96.88
Nov-11	206.62	123.09	108.15	89.40	206.16	160.42	96.91
Dec-11	206.80	...	112.53	72.16	179.74	175.88	93.30

Continue...

Table 4

**Annual and Monthly Indexes**  
Base year 1999=100

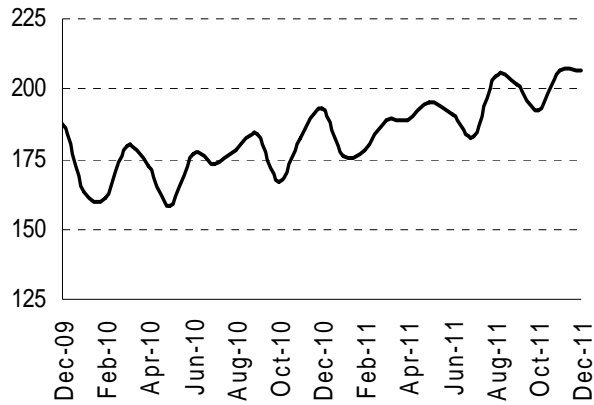
Period	Edition of newspapers, magazines and periodicals publications	Manufacture of refined petroleum	Production of cement	Manufacture of basic iron and steel	Manufacture of Automobiles		
					Family, minivans	Pickup trucks	Passen. freight transport
2007	229.59	103.78	160.85	130.65	214.58	253.52	254.14
2008	228.59	100.21	167.78	129.99	231.86	244.62	319.06
2009	223.09	93.96	151.03	102.81	181.89	198.85	126.02
<b>2010</b>							
Jan-10	227.62	100.62	135.86	128.16	69.01	126.38	36.58
Feb-10	223.61	91.40	133.16	105.24	176.24	237.48	124.10
Mar-10	214.27	103.51	166.69	126.24	236.16	279.13	180.47
Apr-10	211.92	98.76	164.11	113.49	225.84	305.53	181.17
May-10	215.27	100.97	163.95	130.89	218.31	313.60	136.37
Jun-10	202.61	95.62	159.43	108.53	250.72	338.61	196.91
Jul-10	202.75	99.80	170.48	114.72	237.14	275.18	174.57
Aug-10	206.94	106.30	171.91	145.68	283.17	412.13	148.87
Sep-10	204.09	100.30	166.91	133.98	282.11	393.37	201.89
Oct-10	209.72	92.83	173.28	142.47	257.90	374.50	149.57
Nov-10	205.78	99.63	178.36	135.71	281.97	416.72	194.13
Dec-10	211.00	90.61	177.01	145.22	233.38	375.29	180.94
<b>2011</b>							
Jan-11	218.96	99.10	163.78	145.23	126.29	114.14	16.21
Feb-11	213.73	94.33	152.10	131.37	171.33	323.20	168.90
Mar-11	210.38	105.11	174.44	144.44	266.39	396.12	181.86
Apr-11	210.90	95.24	186.30	138.58	271.86	414.70	162.42
May-11	207.72	88.90	184.27	144.29	311.34	432.80	192.05
Jun-11	208.08	96.73	173.91	135.14	329.47	429.41	183.25
Jul-11	208.61	103.45	181.83	144.82	294.43	372.24	185.92
Aug-11	203.78	91.27	200.09	142.94	307.34	451.74	241.25
Sep-11	203.84	104.55	210.63	141.27	291.57	450.46	216.48
Oct-11	208.57	90.93	209.18	145.11	272.79	428.13	155.12
Nov-11	205.87	86.70	208.98	135.75	252.10	457.40	267.76
Dec-11	206.80	100.61	189.90	142.01	186.27	423.91	170.98

Notes: Provisional data.

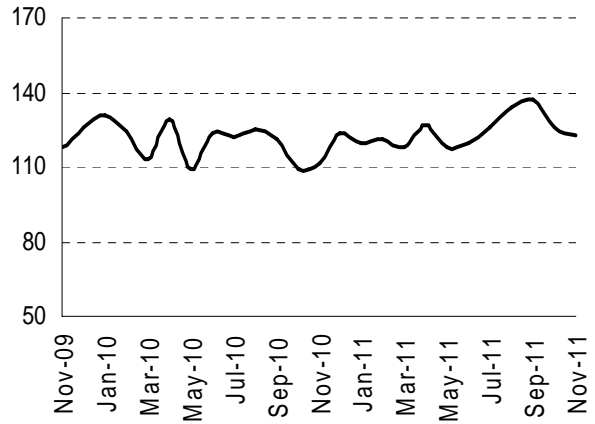
... indicates data not available at the time of presentation of the results.

Source: Dirección Provincial de Estadística (DPE).

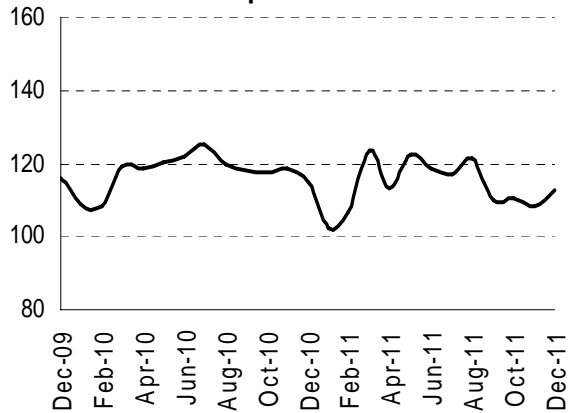
**Production and processing of poultry**



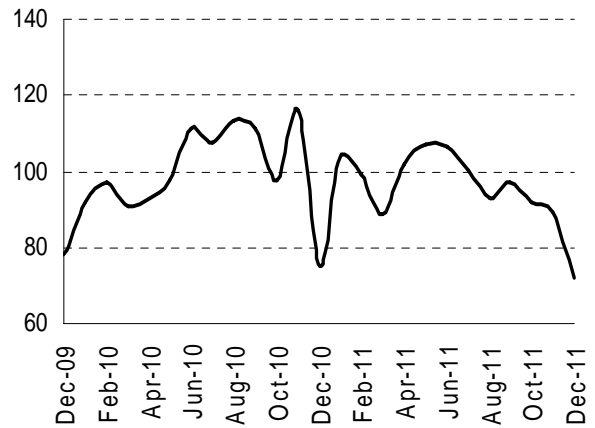
**Production of cold cuts**



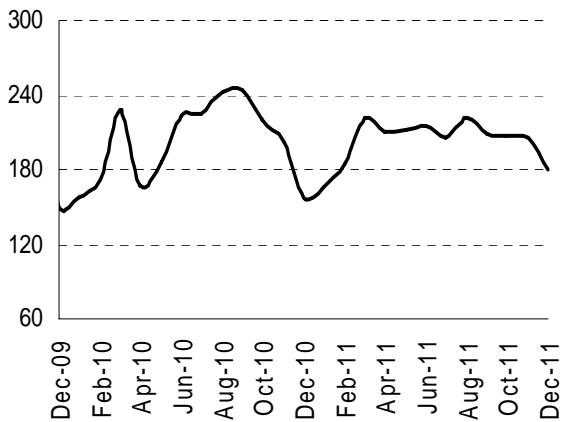
**Production of milk and dried milk products**



**Grinding wheat**



**Production of cookies and cakes**



**Production of beer, malt liquors and malt**

